

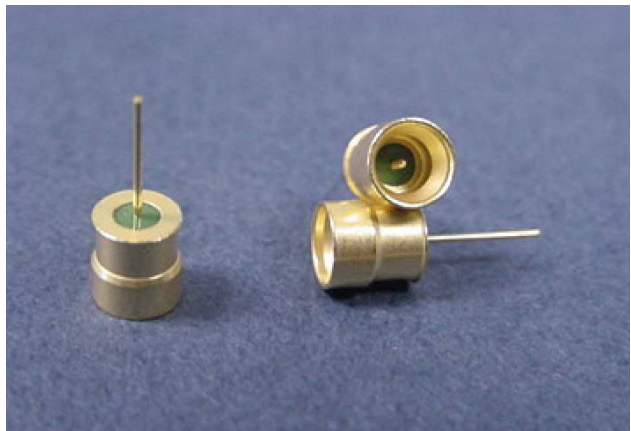


39 Souhegan Street - P.O. Box 269, Wilton, New Hampshire 03086

TEL (603) 654-2002 FAX (603) 654-2533

email: sales@shp-seals.com - website: www.shp-seals.com

SMPM CONNECTORS



Our SMPM aluminum compatible RF connectors are manufactured to MIL-STD-348 with unique processes and controls to assure compliance with all specified properties. Particular attention has been given to plating control to assure required plating thickness. Minimum plating on pins is guaranteed for wire and ribbon bonding. Limited plating on housing is assured to prevent gold embrittlement when soldering with Sn and SnPb based solders and also to preserve dimensional precision.

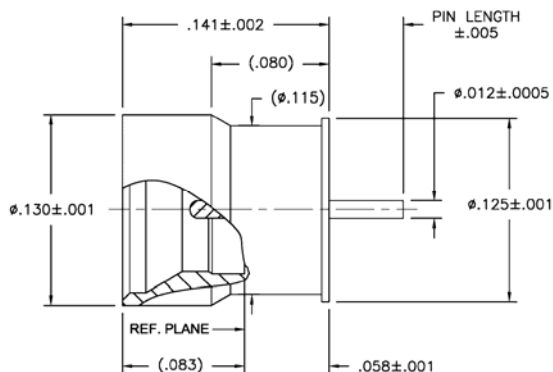
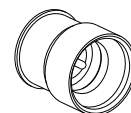
SMPM SPECIFICATION

- | | |
|--------------------------|--|
| Body Material | - Alloy 48 |
| Glass Seal | - Corning 7070 |
| Pin Material | - Iron Nickel Cobalt Alloy |
| Standard Plating | - 50 microinches minimum GOLD per MIL-G-45204, Type III, Grade A on body & pin over 100-200 microinches Electroless NICKEL per MIL-C-26074. Other plating available. |
| Frequency | - Up to 40 GHz |
| Pin Launch Concentricity | - .004 TIR |
| Impedance | - 50 Ohm nominal |
| Engage/Disengage Force | - Per DSCC 94007 & DSCC 94008 |
| Connector Interface | - Per MIL-STD-348 |



SMPM CONNECTORS

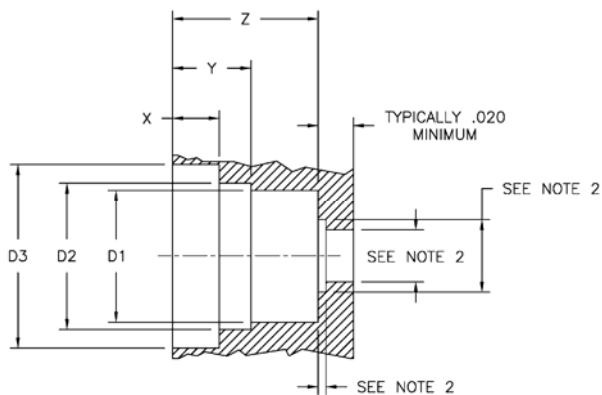
ROBUST ALUMINUM COMPATIBLE



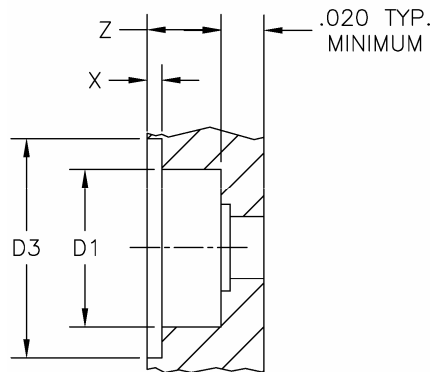
For superior performance when used in place of commonly available competitive devices. Consult SHP for application guidance.

PART NO.	BODY MATERIAL
RACMPO-1300x-xxxR-40	ALLOY 48

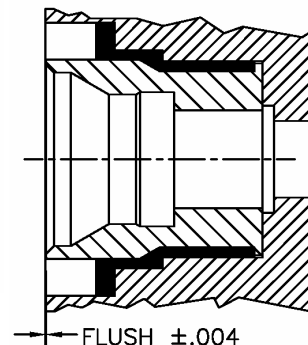
- Indicate Detent (see note 1)
- Indicate Pin Length in thousandths
- Radius optional
- Standard Plating (Contact SHP for other plating options)



Flush Application



Max Protrusion Application



SERIES	PROTRUSION	X ±.002	Y ±.002	Z ±.002	D1 ±.001	D2 ±.001	D3 ±.002
RACMPO-1300	FLUSH	.045	.076	.141	.128	.142	.178
	MAX	.012	N/A	.060	.128	N/A	.178
	OTHER	CONTACT SHP			.128	.142	.178

NOTES: (1) Insert: F - Full Detent, L - Limited Detent, or S - Smooth Bore
 (2) Thru hole and compensation c'bore are customer specified
 (3) Preforms available. Contact factory

All dimensions are inches.