



**HERMETIC HEADERS  
 SOLDERABLE**



These miniature "Aluminum Compatible" headers provide high density hermetic feedthru arrays in DC, Capacitive or Hybrid arrangements. The design allows for highly reliable soldering in aluminum and other high expansion materials intended for severe thermal environments. Rugged pins allow for soldering or wire/ribbon bonding to sides or ends. Available in standard configurations shown herein and special configurations, tailored to customer needs. Parts also available for low expansion materials...call us for information.

**SPECIFICATION**

- Designed to MIL-F-15733
- Material - Steel
- Insulation - Glass
- Finish - 50 microinches minimum GOLD per MIL-G-45204, Type III, Grade A over 200-400 microinches NICKEL per MIL-C-26074
- Leak Rate - Less than  $1 \times 10^{-8}$  cc/sec @ 1 ATM (He).
- Maximum Temperature - 250°C
- DMV (pin to ground) - 500
- DMV (Cap) - 50 VDC (higher available)
- Capacitance - up to 10,000 pF GMV (+ 100% / - 0)
- Insulation Resistance - 1,000 meg ohm-mfd @ 25°C
- Dissipation Factor - Less than 3%

STANDARD HEADERS									
PART NO.					OTHER DIMENSIONS			MATERIAL	
Series	No. of Pins <sup>(2)</sup>	L1 ±.005 <sup>(3)</sup>	L2 ±.005 <sup>(3)</sup>	Plating Code <sup>(4)</sup>	Pin Diameter <sup>(1)</sup>	No. of Pins	Pin Spacing o.c.	Glass	Body & Pin
HH50Axx	xP	xxx	xxx	02	.018, .020	2 thru 9	.050	9013	Steel
HH60xx	xP	xxx	xxx	02	.018, .020, .025	2 thru 7	.060		
HH2Mxx	xP	xxx	xxx	02	.020, .025	2 thru 6	.0787		
HH80xx	xP	xxx	xxx	02	.020, .025	2 thru 6	.080		
HH100xx	xP	xxx	xxx	02	.020, .025, .030	2 thru 4	.100		
CAP & HYBRIDS	Call for ordering information								

Example Part No: HH8025-4P-125-250-02

- NOTES:** (1) Insert pin diameter in thousandths in series.  
 (2) Insert pin quantity  
 (3) Insert L1 and L2 pin lengths in thousandths.  
 (4) Standard plating - others available  
 (5) Standard pin termination is straight-cut. See Bulletin 100, page 3 for special pin terminations.



39 Souhegan Street - P.O. Box 269, Wilton, New Hampshire 03086  
 TEL (603) 654-2002 FAX (603) 654-2533  
 email: sales@shp-seals.com - website: www.shp-seals.com

**HERMETIC HEADERS  
SOLDERABLE**

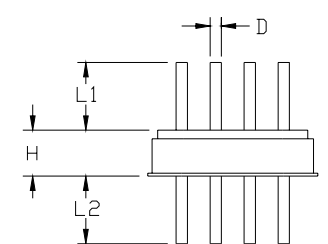
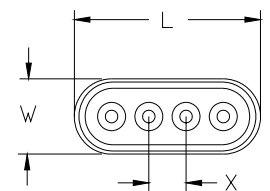
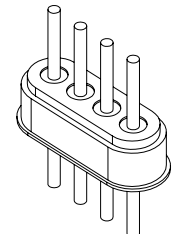
		Series Prefix - HH50A										
	DIM	NO. PINS	2P	3P	4P	5P	6P	7P	8P	9P	> 9P <sup>(2)</sup>	
.050 OC	DIM	L (±.002)	.160	.210	.260	.310	.360	.410	.460	.510	(1)	
		W	.110±.002									
		H	.060 ±.002									
		D	.018, .020 ±.0015									
		X	.050 Non-cumulative									
		L1/L2	Specify length in thousandths ±.005									

		Series Prefix - HH60								
	DIM	NO. PINS	2P	3P	4P	5P	6P	7P	> 7P <sup>(2)</sup>	
.060 OC	DIM	L (±.002)	.180	.240	.300	.360	.420	.480	(1)	
		W	.120 ±.002							
		H	.080 ±.002							
		D	.018, .020, .025 ±.0015							
		X	.060 Non-cumulative							
		L1/L2	Specify length in thousandths ±.005							

		Series Prefix - HH2M							
	DIM	NO. PINS	2P	3P	4P	5P	6P	> 6P <sup>(2)</sup>	
2mm OC (.0787)	DIM	L (±.002)	.200	.280	.360	.440	.520	(1)	
		W	.120 ±.002						
		H	.080 ±.002						
		D	.020, .025 ±.0015						
		X	.0787 Non-cumulative						
		L1/L2	Specify length in thousandths ±.005						

		Series Prefix - HH80							
	DIM	NO. PINS	2P	3P	4P	5P	6P	> 6P <sup>(2)</sup>	
.080 OC	DIM	L (±.002)	.200	.280	.360	.440	.520	(1)	
		W	.120 ±.002						
		H	.080 ±.002						
		D	.020, .025 ±.0015						
		X	.080 Non-cumulative						
		L1/L2	Specify length in thousandths ±.005						

		Series Prefix - HH100					
	DIM	NO. PINS	2P	3P	4P	> 4P <sup>(2)</sup>	
.100 OC	DIM	L (±.002)	.250	.350	.450	(1)	
		W	.150 ±.002				
		H	.080 ±.002				
		D	.020, .025, .030 ±.0015				
		X	.100 Non-cumulative				
		L1/L2	Specify length in thousandths ±.005				



**NOTE:** (1) Contact SHP for specifications.  
 (2) Pin counts shown are standard & maximum for full military temp environment (-65°C to +125°C). Higher pin counts can be provided for reduced environments. Call SHP for guidance.

All dimensions are in inches.

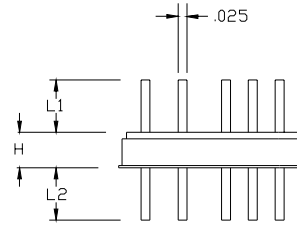
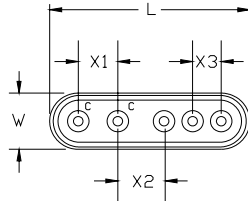
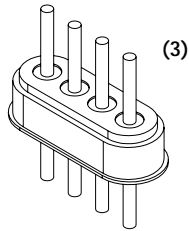


39 Souhegan Street - P.O. Box 269, Wilton, New Hampshire 03086

TEL (603) 654-2002 FAX (603) 654-2533

email: sales@shp-seals.com - website: www.shp-seals.com

**HERMETIC HEADERS  
SOLDERABLE**



		Series - Prefix HHCA-			
		No. Pins	2P	3P	4P
CAPS	DIM.	L (±.002)	.260	.380	.500
		W	.140 (±.002)		
		H	.125(±.002)		
		D	.025 (±.0015)		
		X	.120 non-cumulative		
		L1/L2±.005	Specify length in thousandths		

		Series - Prefix HHHY-					
		No. Pins	2P	3P	4P	5P	6P
HYBRID (DC & Caps)	1 CAP	L (±.002)	.232 <sup>(2)</sup>	.300 <sup>(2)</sup>	.368 <sup>(2)</sup>	.436 <sup>(2)</sup>	.501 <sup>(2)</sup>
		W	.140 (±.002)				
		H	.125(±.002)				
		D	.025 (±.0015)				
		X <sub>1</sub> /X <sub>2</sub> /X <sub>3</sub>	X <sub>1</sub> = .115, X <sub>2</sub> = .092, X <sub>3</sub> = .068 non-cumulative				
		L1/L2±.005	Specify length in thousandths				
	2 CAPS	No. Pins		3P	4P	5P	
		L (±.002)		TBD	TBD	TBD	
		W		.140 (±.002)			
		H		.125 (±.002)			
		D		.025 (±.0015)			
		X <sub>1</sub> /X <sub>2</sub> /X <sub>3</sub>		X <sub>1</sub> = .115, X <sub>2</sub> = .092, X <sub>3</sub> = .068 non-cumulative			
L1/L2±.005		Specify length in thousandths					

- NOTES: (1) X<sub>1</sub>/X<sub>2</sub>/X<sub>3</sub> are minimums and are standard. Other spacing available within maximum overall length shown.  
 (2) This length will vary depending on arrangement of capacitors in header.  
 (3) Shown with straight-cut pins. See Bulletin 100, page 3 for other pin terminations.

All dimensions are in inches.