

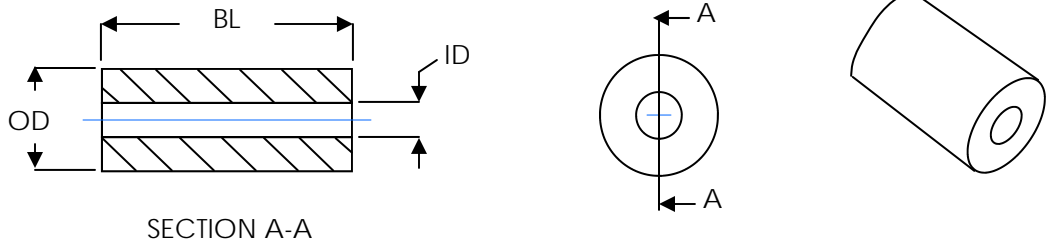


39 Souhegan Street - P.O. Box 269, Wilton, New Hampshire 03086

TEL (603) 654-2002 FAX (603) 654-2533

email: sales@shp-seals.com - website: www.shp-seals.com

BUSHINGS, TFE



DIELECTRIC BUSHINGS

Precision dielectric bushings of TFE are readily available in standard sizes for your connector launch and partition feedthru needs.

Bushings are available for a 50 ohm match with center conductor diameters of 12, 15, 18 and 20 thousandths of an inch. Precise tolerances are maintained to insure minimum deviation from 50 ohms. Standard parts are available to any specified length⁽³⁾ within two weeks or less. Precision bushings to other specifications are also available.

STANDARD TFE BUSHINGS				
PART NO.		OTHER DIMENSIONS		INSTALLATION DATA
Series	BL ±.005 (3),(4)	ID ±.001	OD±.001 (3)	Recommended Bore
SPB5012	xxx	.012	.039	.041
SPB5015	xxx	.015	.049	.051
SPB5018	xxx	.019	.059	.061
SPB5020	xxx	.021	.065	.067

Example Part No: SPB5020-160

- NOTES:
- (1) Material is TFE, dielectric constant 2.05 ±.05.
 - (2) Geometry optimized for 50 ohms and minimum deviation.
 - (3) Maximum length available is .400.
 - (4) Specify length in thousandths.

All dimensions are in inches.