

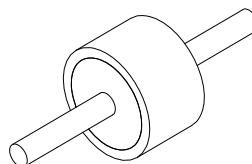
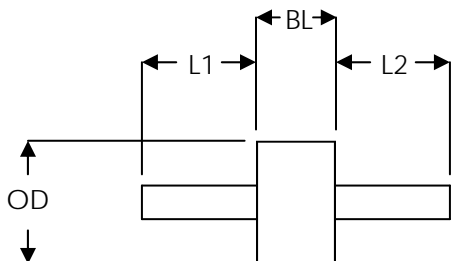


39 Souhegan Street - P.O. Box 269, Wilton, New Hampshire 03086

TEL (603) 654-2002 FAX (603) 654-2533

email: sales@shp-seals.com - website: www.shp-seals.com

**HERMETIC
STRAIGHT BARREL FEEDTHRU**



These feedthrus are manufactured to SHP's high quality standards of crack-free glass, complete & controlled metal oxidation, stringent meniscus control and quality surface finish. These seals are intended for use in a variety of applications including non-hermetic and hermetic applications for certain housing materials and solders. Max leak rate 1×10^{-8} cc/sec @ 1 atm (He). Contact us for free application consultation.

STANDARD SEALS (1) (3)									
PART NO.				OTHER DIMENSIONS			f _c	MATERIAL	
SERIES	L1 (3) ±.005	L2 (3) ±.003	PLATING CODE (2)	OD +.0015 -.001	BL ±.002	PIN DIA. RF ±.0005 DC ±.0015	GHz	GLASS Corning or Equiv.	FERRULE & PIN
50 Ω									
SB1118 (5)	xxxR	xxx	01	.110	.060	.018	31	7070	ASTM-F15
SB1520 (5)	xxxR	xxx	01	.158	.060	.020	23	7052	
SB7612 (5)	xxxR	xxx	01	.076	.062	.012	46	7070	
SB76A12 (5)	xxxR	xxx	01	.076	.055	.012	46	7070	
SB76B12 (6)	xxxR	xxxR	01	.076	.055(7)	.012	49	7070	
SB76B12 (6)	041R	029R	01	.076	.055(7)	.012	49	7070	
SB76C12 (5)	xxxR	xxx	01	.076	.069	.012	46	7070	
SB76D12 (5)	xxxR	xxx	01	.076	.040	.012	46	7070	
SB9815 (5)	xxxR	xxx	01	.098	.062	.015	40	7070	
DC									
SB50xx (4)	xxx	xxx	01	.050	.040	.015, .018, .020	N/A	7052	ASTM-F15
SB98xx (4)	xxx	xxx	01	.098	.062	.025, .030, .040			

Example Part No: SB9815-050R-050-01

- NOTES: (1) Seals of any desired geometry can be provided. Contact us for your special requirements.
 (2) Standard plating is 50 microinches minimum GOLD per MIL-G-45204, Type III Grade A over 100-200 microinches NICKEL per MIL-C-26074. Other plating available. Plating thickness is measured on pin.
 (3) Standard pin termination is straight cut (radius on L1 end on 50 Ω). Special pin terminations are also available (See Bulletin 100, Page 3).
 (4) Insert desired pin diameter in thousandths, in series.
 (5) 50 ±2 Ω.
 (6) 50 ±1 Ω.
 (7) BL tolerance is ±.001 in lieu of ±.002

All dimensions are inches.