

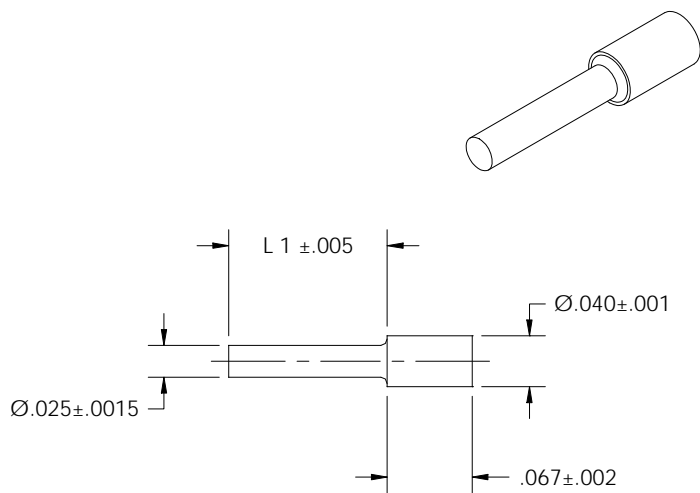


39 Souhegan Street - P.O. Box 269, Wilton, New Hampshire 03086

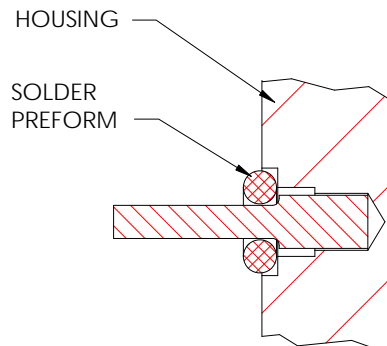
TEL (603) 654-2002 FAX (603) 654-2533

email: sales@shp-seals.com - website: www.shp-seals.com

EXTERNAL GROUND PIN



OUTLINE



APPLICATION

This ground pin is designed for ease of solderability in high expansion housing materials as well as for high solder joint reliability in severe thermal cyclic environments. Its enlarged base and application geometry facilitate plating in the blind bore, thereby ensuring a sound solder joint.

SPECIFICATION

Material - Steel

Plating - 50 microinches minimum GOLD per MIL-G-45204, Type III, Grade A over 200-400 microinches NICKEL per MIL-C-26074.

Other plating available.

APPLICATION INSTRUCTIONS

DRILL $.043 \pm .001$ Dia. X $.080 \pm .002$ DP.

C'DRILL $.052 \pm .001$ Dia. X $.040 \pm .003$ DP.

C'BORE $.081 \pm .002$ Dia. X $.012 \pm .002$ DP.

Example Part No: SHPP25/40-167-067-02

NOTE: Solder preforms available in Sn63, Sn96 and Sb5.

Part No. SPPF-25/40-xx (insert last 2 digits of solder in place of xx).

All dimensions are inches.